

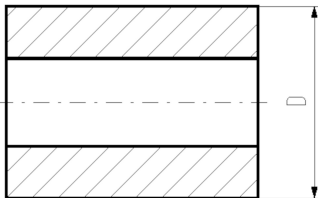
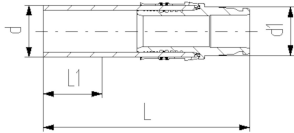
COOL-FIT 2.0 Adaptor fitting PE/iFIT



Model:

- Spigot fitting PE100 SDR11, metric with free end
- iFIT module stainless steel 1.4404 / 316L
- Including insulation half shells

d	d1	PN	Code	Weight	D	L	L1	L2
(mm)	(mm)	(bar)		(kg)	(mm)	(mm)	(mm)	(mm)
32	25-32	10	738 944 108	0.229	70	132	36	80



The technical data are not binding. They neither constitute expressly warranted characteristics nor guaranteed properties nor a guaranteed durability. They are subject to modification. Our General Terms of Sale apply.

Georg Fischer Piping Systems Ltd, Postfach, CH-8201 Schaffhausen/Switzerland

Phone +41 -(0)52-631 1111

e-mail: info.ps@georgfischer.com

Internet: <http://www.gfps.com>