

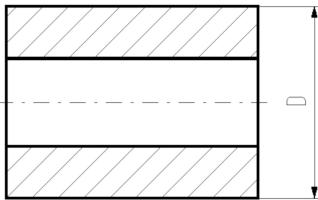
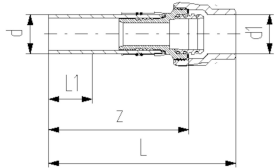
COOL-FIT 2.0 Adaptor fitting PE/Sanipex MT

Model:

- Spigot fitting PE100 SDR11, metric with free end
- Sanipex MT adaptor brass CuZn40Pb2
- Including Insulation made from NBR foam



| d | d1 | PN | Code | Weight | D | L | L1 | L2 | z |
|------|------|-------|--------------------|--------|------|------|------|------|------|
| (mm) | (mm) | (bar) | | (kg) | (mm) | (mm) | (mm) | (mm) | (mm) |
| 32 | 32 | 10 | 738 954 118 | 0.441 | 86 | 174 | 36 | 101 | 135 |



The technical data are not binding. They neither constitute expressly warranted characteristics nor guaranteed properties nor a guaranteed durability. They are subject to modification. Our General Terms of Sale apply.

Georg Fischer Piping Systems Ltd, Postfach, CH-8201 Schaffhausen/Switzerland

Phone +41 -(0)52-631 1111

e-mail: info.ps@georgfischer.com

Internet: <http://www.gfps.com>