

# Victaulic Aquamine® Products

## SERIES 2900

The Victaulic Aquamine line of reusable PVC products is the fastest, easiest and most economical method for joining PVC pipe for water services.

Ranging in size from 2 to 12"/50 – 300mm for pressures up to 350psi/2400kPa. Victaulic Aquamine products are joined by inserting a spline into the groove provided with each product. Ideal for water supply, water bypass, dewatering lines and other water services these products can easily be reused and redeployed as needed.

The complete Victaulic Aquamine line consists of pipe, couplings, fittings and valves available with a variety of end connections.



PATENTED

### MATERIAL SPECIFICATIONS

**Pipe:** PVC 1120 type 1, grade 1 (class 12454) conforming to ASTM D-1784 and ASTM D-2241.

**Couplings:** PVC 1120 type 1, grade 1 (class 12454) conforming to ASTM D-1784 and ASTM D-3139

**Fittings:** PVC 1120 type 1, grade 1 (class 12454) conforming to ASTM D-1784 and ASTM D-2241

**Valves:**

**Housing:** Ductile iron conforming to ASTM A-536, grade 65-45-12

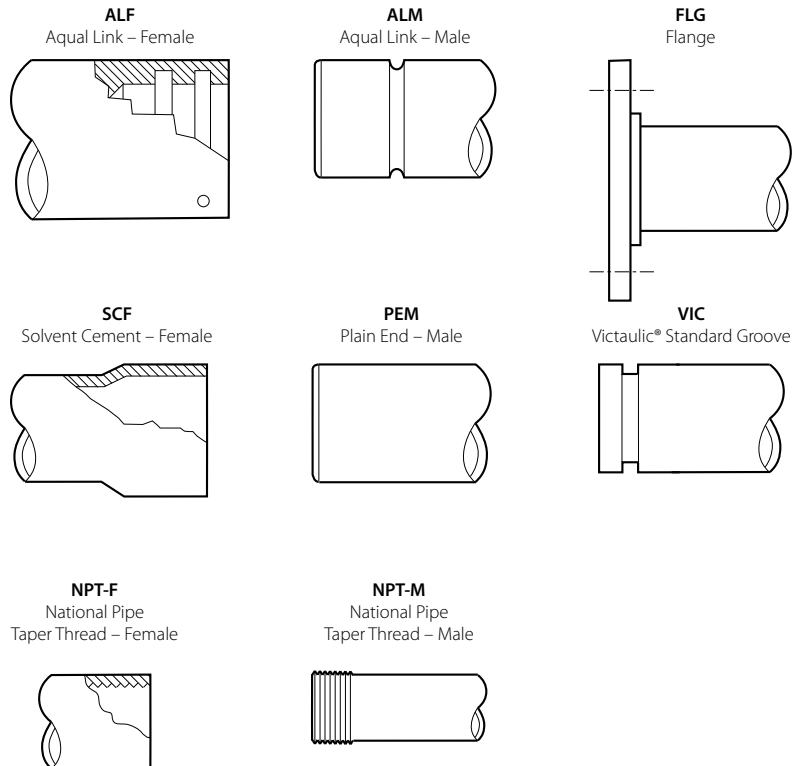
**Body:** PVC 1120

**Disc:** Ductile iron conforming to ASTM A-536, grade 65-45-12. Grade "T" Nitrile rubber encapsulated disc conforms to ASTM D-2000.

**O-Rings:** Polyisoprene (IR) conforming to ASTM F-477

**Spline:** Nylon. For higher pressure services Nylon 66 is used.

### PRODUCT END CONNECTION DESIGNATIONS



**JOB/OWNER**

System No. \_\_\_\_\_  
 Location \_\_\_\_\_

**CONTRACTOR**

Submitted By \_\_\_\_\_  
 Date \_\_\_\_\_

**ENGINEER**

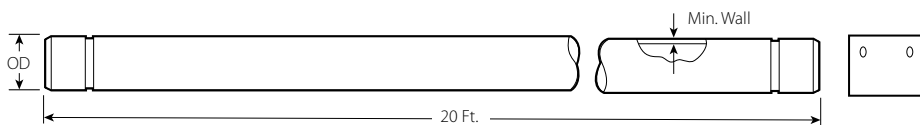
Spec Sect \_\_\_\_\_ Para \_\_\_\_\_  
 Approved \_\_\_\_\_  
 Date \_\_\_\_\_

# Victaulic Aquamine® Products

## SERIES 2900

### SERIES 2900 AQUAMINE PIPE WITH COUPLING

NOTE: Aquamine pipe is sold in 20 ft. lengths with one coupling included, but packed separately



Size	SDR	Pressure Rating	Pipe O.D.	Minimum Wall	Weight Per Ft.
Nominal Size Inches mm		PSI kPa	Inches mm	Inches mm	Lbs. kg
2 50	17	250 1724	2.375 60.3	0.140 3.56	0.69 0.3
	21	200 1379	2.375 60.3	0.113 2.88	0.57 0.3
3 80	17	250 1724	3.500 88.9	0.206 5.21	1.45 0.7
	21	200 1379	3.500 88.9	0.167 4.24	1.19 0.5
4 100	12.4	350 2413	4.500 114.3	0.363 9.22	2.96 1.3
	17	250 1724	4.500 114.3	0.265 6.73	2.40 1.1
	21	200 1379	4.500 114.3	0.214 5.44	1.96 0.9
	26	160 1103	4.500 114.3	0.173 4.39	1.60 0.7
6 150	12.4	350 2413	6.625 168.3	0.534 13.56	6.42 2.9
	17	250 1724	6.625 168.3	0.390 9.91	5.20 2.4
	21	200 1379	6.625 168.3	0.316 8.03	4.26 1.9
	26	160 1103	6.625 168.3	0.255 6.48	3.46 1.6
8 200	12.4	350 2413	8.625 219.1	0.696 17.68	11.03 5.0
	17	250 1724	8.625 219.1	0.508 12.90	8.81 4.0
	21	200 1379	8.625 219.1	0.410 10.41	7.21 3.3
	26	160 1103	8.625 219.1	0.332 8.43	5.91 2.7
10 250	26	160 1103	10.750 273.1	0.413 10.49	9.20 4.2
12 300	26	160 1103	12.750 323.9	0.490 12.45	12.98 5.9

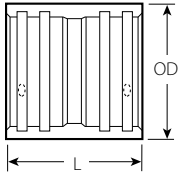
### AQUAMINE PIPE PALLET PACK AND TRUCKLOAD QUANTITIES

Pipe Size	Feet Per Pallet Pack	Packs Per Truck	Feet Per Truck
2"	2,100	24	50,400
3"	920	24	22,080
4"	520	24	12,480
4" 350 psi	520	24	12,480
6"	400	20	8,000
6" 350 psi	400	16	6,400
8"	280	16	4,480
8" 350 psi	280	14	3,920
10"	160	16	2,560
12"	160	12	1,920

# Victaulic Aquamine® Products

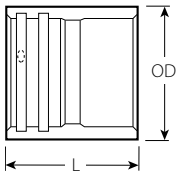
## SERIES 2900

### SERIES 2904 FEMALE X FEMALE COUPLING (ALF X ALF)



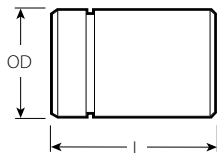
Size	Pressure Rating	L	O.D.	Weight
Nominal Size Inches mm	PSI kPa	Inches mm	Inches mm	Lbs. kg
2	250	5.25	3.20	0.9
50	1724	133.35	81.28	0.4
3	250	7.25	4.38	1.9
80	1724	184.15	111.25	0.9
4	250	8.25	5.47	3.1
100	1724	209.55	138.94	1.4
4 HP	350	8.25	6.00	5.0
100	2413	209.55	152.40	2.3
6	250	8.25	7.84	5.6
150	1724	209.55	199.14	2.5
6 HP	350	8.25	8.72	10.5
150	2413	209.55	221.49	4.8
8	200	9.50	10.19	11.1
200	1379	241.30	258.83	5.0
8	250	9.50	10.19	11.1
200	1724	241.30	258.83	5.0
8 HP	350	9.50	10.75	15.2
200	2413	241.30	273.05	6.9
10	160	12.00	12.44	18.0
250	1103	304.80	315.98	8.2
12	160	12.00	14.65	24.2
300	1103	304.80	372.11	11.0

### SERIES 2905 FEMALE X SOLVENT CEMENT (FEMALE) COUPLING (ALF X SCF)



Size	Pressure Rating	L	O.D.	Weight
Nominal Size Inches mm	PSI kPa	Inches mm	Inches mm	Lbs. kg
2	250	5.50	3.20	1.0
50	1724	139.7	81.28	0.5
3	250	8.00	4.38	2.2
80	1724	203.2	111.25	1.0
4	250	9.00	5.47	3.4
100	1724	228.6	138.94	1.5
6	250	9.00	7.84	6.3
150	1724	228.6	199.14	2.9
8	200	10.00	10.19	12.2
200	1379	254.0	258.83	5.5
10	160	12.00	12.44	18.7
250	1103	304.8	315.98	8.5
12	160	12.00	14.65	24.7
300	1103	304.8	372.11	11.2

### SERIES 2906 AQUAMINE GROOVE X SOLVENT CEMENT (ALM X PEM)

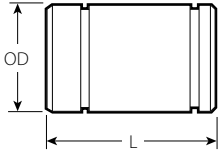


Size	Pressure Rating	L	O.D.	Weight
Nominal Size Inches mm	PSI kPa	Inches mm	Inches mm	Lbs. kg
2	250	7.00	2.375	0.5
50	1724	177.8	60.33	0.2
3	250	9.00	3.50	1.4
80	1724	228.6	88.90	0.6
4	250	10.00	4.50	2.4
100	1724	254.0	114.30	1.1
6	250	12.00	6.625	5.5
150	1724	304.8	168.28	2.5
8	200	13.00	8.625	9.3
200	1379	330.2	219.08	4.2
10	160	16.00	10.750	14.2
250	1103	406.4	273.05	6.4
12	160	16.00	12.750	20.0
300	1103	406.4	323.85	9.1

# Victaulic Aquamine® Products

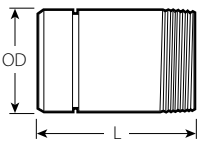
## SERIES 2900

### SERIES 2907 AQUAMINE GROOVE X ORIGINAL VICTAULIC GROOVE (ALM X VIC)



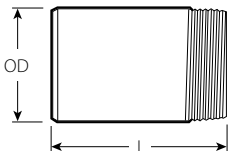
Size	Pressure Rating	Material	L	O.D.	Weight
Nominal Size Inches mm	PSI kPa		Inches mm	Inches mm	Lbs. kg
2 50	250 1724	PVC	7.00 177.8	2.375 60.33	0.5 0.2
3 80	250 1724	PVC	9.00 228.6	3.500 88.90	1.4 0.6
4 100	240 1655	PVC	10.00 254.0	4.500 114.30	2.4 1.1
4 HP 100	350 2413	Steel	9.00 228.6	4.500 114.30	5.5 2.5
6 150	160 1103	PVC	12.00 304.8	6.625 168.28	5.5 2.5
6 HP 150	350 2413	Steel	10.00 254.0	6.625 168.28	10.0 4.5
8 200	120 827	PVC	13.00 330.2	8.625 219.08	9.3 4.2
8 HP 200	350 2413	Steel	10.00 254.0	8.625 219.08	14.5 6.6
10 250	100 689	PVC	16.00 406.4	10.750 273.05	14.2 6.4
12 300	80 552	PVC	16.00 406.4	12.750 323.85	20.0 9.1

### SERIES 2908 AQUAMINE GROOVE X MALE THREAD NIPPLE (ALM X NPT-M)



Size	Pressure Rating	L	O.D.	Weight
Nominal Size Inches mm	PSI kPa	Inches mm	Inches mm	Lbs. kg
2 50	200 1379	7.00 177.8	2.375 60.33	0.5 0.2
3 80	190 1310	9.00 228.6	3.500 88.90	1.4 0.6
4 100	160 1103	10.00 254.0	4.500 114.30	2.4 1.1
6 150	140 965	12.00 304.8	6.625 168.28	5.5 2.5
8 200	120 827	13.00 330.2	8.625 219.08	9.3 4.2
10 250	120 827	16.00 406.4	10.750 273.05	14.2 6.4
12 300	110 758	16.00 406.4	12.750 323.85	20.0 9.1

### SERIES 2909 SOLVENT-CEMENT X MALE THREAD NIPPLE (PEM X NPT-M)

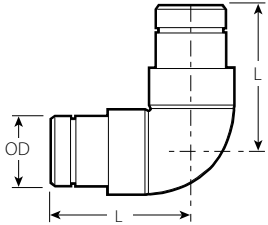


Size	Pressure Rating	L	O.D.	Weight
Nominal Size Inches mm	PSI kPa	Inches mm	Inches mm	Lbs. kg
2 50	200 1379	5.25 133.35	2.375 60.33	0.5 0.2
3 80	190 1310	6.50 165.10	3.500 88.90	1.4 0.6
4 100	160 1103	7.00 177.80	4.500 114.30	2.4 1.1
6 150	140 965	9.00 228.6	6.625 168.28	5.5 2.5
8 200	120 827	10.40 264.16	8.625 219.08	9.3 4.2
10 250	120 827	16.00 406.40	10.750 273.05	14.2 6.4
12 300	110 758	16.00 406.40	12.750 323.85	20.0 9.1

# Victaulic Aquamine® Products

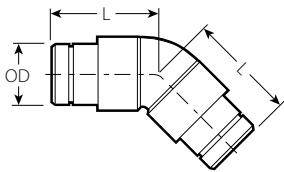
## SERIES 2900

### SERIES 2910 AQUAMINE GROOVE X AQUAMINE GROOVE 90° ELBOW (ALM X ALM)



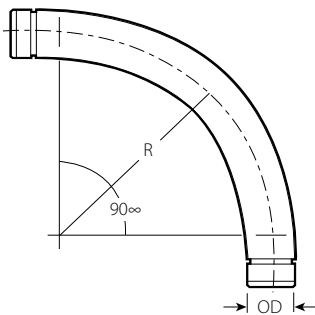
Size	Pressure Rating	L	O.D.	Weight
Nominal Size Inches mm	PSI kPa	Inches mm	Inches mm	Lbs. kg
2	250	8.00	2.375	1.8
50	1724	203.20	60.33	0.8
3	250	10.88	3.500	4.6
80	1724	276.35	88.90	2.1
4	250	12.38	4.500	8.0
100	1724	314.45	114.30	3.6
6	250	15.63	6.625	19.6
150	1724	397.00	168.28	8.9
8	200	18.00	8.625	34.4
200	1379	457.20	219.08	15.6
10	160	25.10	10.750	57.2
250	1103	637.54	273.05	25.9
12	160	25.70	12.750	83.9
300	1103	652.78	323.85	38.1

### SERIES 2912 AQUAMINE GROOVE X AQUAMINE GROOVE 45° ELBOW (ALM X ALM)



Size	Pressure Rating	L	O.D.	Weight
Nominal Size Inches mm	PSI kPa	Inches mm	Inches mm	Lbs. kg
2	250	7.75	2.375	1.7
50	1724	196.85	60.33	0.8
3	250	9.75	3.500	3.9
80	1724	247.65	88.90	1.8
4	250	11.75	4.500	7.0
100	1724	298.45	114.30	3.2
6	250	13.00	6.625	16.4
150	1724	330.20	168.28	7.4
8	200	15.00	8.625	28.7
200	1379	381.00	219.08	13.0
10	160	18.30	10.750	47.4
250	1103	464.82	273.05	21.5
12	160	18.75	12.750	72.7
300	1103	476.25	323.85	33.0

### SERIES 2913 AQUAMINE GROOVE X AQUAMINE GROOVE 90° SWEEP (ALM X ALM)



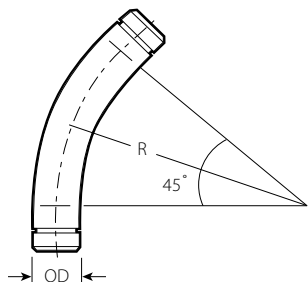
Size	Pressure Rating	L	O.D.	Weight
Nominal Size Inches mm	PSI kPa	Inches mm	Inches mm	Lbs. kg
2	250	12.0	2.375	2.1
50	1724	304.8	60.33	1.0
3	250	18.0	3.500	6.4
80	1724	457.2	88.90	2.9
4	250	21.5	4.500	10.9
100	1724	546.1	114.30	4.9
4 HP	350	21.5	4.500	14.8
100	2413	546.1	114.30	6.7
6	250	29.0	6.625	28.4
150	1724	736.6	168.28	12.9
6 HP	350	29.0	6.625	43.2
150	2413	736.6	168.28	19.6
8	200	30.0	8.625	44.0
200	1379	762.0	219.08	20.0
8 HP	350	30.0	8.625	67.4
200	2413	762.0	219.08	30.6
10*	160	65.0	10.750	121.5
250	1103	1651.0	273.05	55.1
12*	160	66.0	12.750	170.7
300	1103	1676.4	323.85	77.4

\*Fabricated fittings

# Victaulic Aquamine® Products

## SERIES 2900

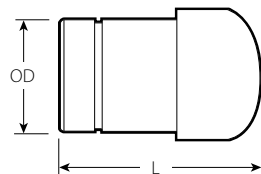
### SERIES 2914 AQUAMINE GROOVE 45° SWEEP (ALM X ALM)



Size	Pressure Rating	L	O.D.	Weight
Nominal Size Inches mm	PSI kPa	Inches mm	Inches mm	Lbs. kg
2 50	250 1724	12.0 304.8	2.375 60.33	1.3 0.6
3 80	250 1724	18.0 457.2	3.500 88.90	4.1 1.9
4 100	250 1724	21.5 546.1	4.500 114.30	6.9 3.1
4 HP 100	350 2413	21.5 546.1	4.500 114.30	9.4 4.3
6 150	250 1724	29.0 736.6	6.625 168.28	17.9 8.1
6 HP 150	350 2413	29.0 736.6	6.625 168.28	27.3 12.4
8 200	200 1379	30.0 762.0	8.625 219.08	29.9 13.6
8 HP 200	350 2413	30.0 762.0	8.625 219.08	45.8 20.8
10* 250	160 1103	65.0 1651.0	10.750 273.05	75.0 34.0
12* 300	160 1103	66.0 1676.4	12.750 323.85	105.4 47.8

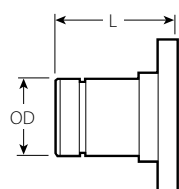
\*Fabricated fittings

### SERIES 2915 AQUAMINE GROOVE END CAP (ALM)



Size	Pressure Rating	L	O.D.	Weight
Nominal Size Inches mm	PSI kPa	Inches mm	Inches mm	Lbs. kg
2 50	250 1724	7.50 190.5	2.375 60.33	1.0 0.5
3 80	250 1724	10.00 254.0	3.500 88.90	2.2 1.0
4 100	250 1724	11.00 279.4	4.500 114.30	3.7 1.7
6 150	250 1724	14.00 355.6	6.625 168.28	8.5 3.9
8 200	200 1379	17.50 444.5	8.625 219.08	15.5 7.0
10 250	160 1103	18.50 469.9	10.750 273.05	22.4 10.2
12 300	160 1103	19.50 495.3	12.750 323.85	32.0 14.5

### SERIES 2916 AQUAMINE GROOVE X FLANGE TRANSITION (ALM X FLG)

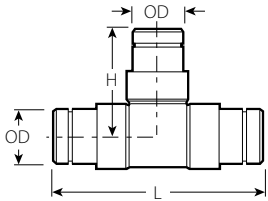


Size	Pressure Rating	L	O.D.	Weight
Nominal Size Inches mm	PSI kPa	Inches mm	Inches mm	Lbs. kg
2 50	150 1034	7.25 184.15	2.375 60.33	1.5 0.7
3 80	150 1034	9.25 234.95	3.500 88.90	3.2 1.5
4 100	150 1034	10.25 260.35	4.500 114.30	5.2 2.4
6 150	150 1034	12.25 311.15	6.625 168.28	10.0 4.5
8 200	150 1034	13.88 352.55	8.625 219.08	16.0 7.3
10 250	150 1034	16.50 419.10	10.750 273.05	25.5 11.6
12 300	150 1034	16.50 419.10	12.750 323.85	37.9 17.2

# Victaulic Aquamine® Products

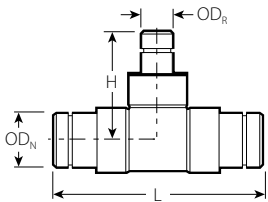
## SERIES 2900

### SERIES 2917 AQUAMINE GROOVE TEE (ALM X ALM X ALM)



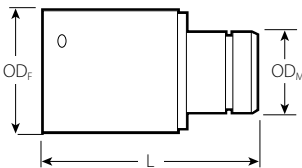
Size	Pressure Rating	L	O.D.	Weight
Nominal Size Inches mm	PSI kPa	Inches mm	Inches mm	Lbs. kg
2	250	16.50	2.375	2.6
50	1724	419.10	60.33	1.2
3	250	21.50	3.500	6.5
80	1724	546.10	88.90	2.9
4	250	24.75	4.500	10.5
100	1724	628.65	114.30	4.8
6	250	31.00	6.625	27.1
150	1724	787.40	168.28	12.3
8	200	36.25	8.625	27.8
200	1379	920.75	219.08	12.6
10	160	45.38	10.750	42.6
250	1103	1152.65	273.05	19.3
12	160	45.00	12.750	60.0
300	1103	1143.00	323.85	27.2

### SERIES 2918 AQUAMINE GROOVE REDUCING TEE (ALM X ALM X ALM)



Size	Pressure Rating	L	O.D. <sub>N</sub>	O.D. <sub>R</sub>	Weight
Nominal Size Inches mm	PSI kPa	Inches mm	Inches mm	Inches mm	Lbs. kg
3 X 3	250	21.50	3.500	2.375	3.3
80 X 80	1724	546.10	88.90	60.33	1.5
4 X 4	250	22.50	4.500	2.375	5.4
100 X 100	1724	571.50	114.30	60.33	2.4
X 3	250	24.50	4.500	3.500	6.3
X 80	1724	622.30	114.30	88.90	2.9
6 X 6	250	31.00	6.625	2.375	11.5
150 X 150	1724	787.40	168.28	60.33	5.2
X 3	250	31.00	6.625	3.500	12.3
X 80	1724	787.40	168.28	88.9	5.6
X 4	250	31.00	6.625	4.500	13.4
X 100	1724	787.40	168.28	114.3	6.1
8 X 8	200	36.25	8.625	4.500	21.0
200 X 200	1379	920.75	219.08	114.30	9.5
X 6	200	36.25	8.625	6.625	24.0
X 150	1379	920.75	219.08	168.28	10.9

### SERIES 2919 AQUAMINE GROOVE X AQUAMINE GROOVE REDUCER (ALF X ALM)

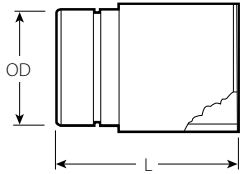


Size	Pressure Rating	L	O.D. <sub>N</sub>	O.D. <sub>R</sub>	Weight
Nominal Size Inches mm	PSI kPa	Inches mm	Inches mm	Inches mm	Lbs. kg
4	250	15.25	5.470	2.375	5.2
100	1724	387.35	138.94	60.33	2.4
X 3	250	15.56	5.470	3.500	5.6
X 80	1724	395.22	138.94	88.90	2.5
6	250	15.75	7.840	2.375	9.9
150	1724	400.05	199.14	60.33	4.5
X 3	250	16.50	7.840	3.500	10.6
X 80	1724	419.10	199.14	88.90	4.8
X 4	250	17.38	7.840	4.500	11.5
X 100	1724	441.45	199.14	114.30	5.2
8	200	17.00	10.190	2.375	23.4
200	1379	431.80	258.83	60.33	10.6
X 4	200	15.63	10.190	4.500	30.0
X 100	1379	397.00	258.83	114.30	13.6
X 6	200	18.50	10.190	6.625	23.5
X 150	1379	469.90	258.83	168.28	10.7
10	160	19.75	12.440	8.625	34.1
250	1103	501.65	315.98	219.08	15.5
12	160	22.25	14.650	8.625	43.9
300	1103	565.15	372.11	219.08	19.9

# Victaulic Aquamine® Products

SERIES 2900

**SERIES 2920  
AQUAMINE GROOVE X SOLVENT-CEMENT  
TRANSITION  
(ALM X SCF)**



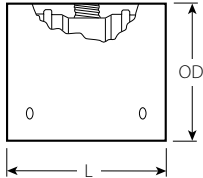
Size	Pressure Rating	L	O.D.	Weight
Nominal Size Inches mm	PSI kPa	Inches mm	Inches mm	Lbs. kg
2 50	250 1724	6.625 168.28	2.375 60.33	1.2 0.5
3 80	250 1724	8.625 219.08	3.500 88.90	2.4 1.1
4 100	250 1724	9.625 244.48	4.500 114.30	3.5 1.6
6 150	250 1724	11.375 288.93	6.625 168.28	8.4 3.8
8 200	200 1379	12.875 327.03	8.625 219.08	16.2 7.3
10 250	160 1103	15.250 387.35	10.750 273.05	28.7 13.0
12 300	160 1103	15.250 387.35	12.750 323.85	37.6 17.1



# Victaulic Aquamine® Products

## SERIES 2900

### SERIES 2930 AQUAMINE GROOVE OUTLET COUPLING (ALF X ALF X NPT-F)

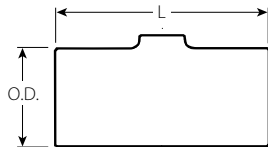


Size		Pressure Rating		L		O.D.		Weight	
Nominal Size Inches mm		PSI kPa		Inches mm		Inches mm		Lbs. kg	
2 X 2 50 X 50	X ¾	200	700	3.20	1.2				
	X 20	1379	177.80	81.28	0.5				
	X 1	200	700	3.20	1.2				
	X 25	1379	177.80	81.28	0.5				
	X ¾	200	9.50	4.38	2.6				
	X 20	1379	241.30	111.25	1.2				
3 X 3 80 X 80	X 1	200	9.50	4.38	2.6				
	X 25	1379	241.30	111.25	1.2				
	X 1½	160	9.50	4.38	2.6				
	X 40	1103	241.30	111.25	1.2				
	4 X 4 100 X 100	X ¾	200	10.50	5.47	4.0			
		X 20	1379	266.70	138.94	1.8			
X 1		200	10.50	5.47	4.0				
X 25		1379	266.70	138.94	1.8				
X 1½		160	10.50	5.47	4.0				
X 40		1103	266.70	138.94	1.8				
6 X 6 150 X 150	X ¾	200	11.25	7.84	7.3				
	X 20	1379	285.75	199.14	3.3				
	X 1	200	11.25	7.84	7.3				
	X 25	1379	285.75	199.14	3.3				
	X 1½	200	11.25	7.84	7.3				
	X 40	1379	285.75	199.14	3.3				
	X 2	160	11.25	7.84	7.3				
	X 50	1103	285.75	199.14	3.3				
8 X 8 200 X 200	X ¾	200	12.50	10.19	13.6				
	X 20	1379	317.50	258.83	6.2				
	X 1	200	12.50	10.19	13.6				
	X 25	1379	317.50	258.83	6.2				
	X 1½	200	12.50	10.19	13.6				
	X 40	1379	317.50	258.83	6.2				
	X 2	200	12.50	10.19	13.6				
	X 50	1379	317.50	258.83	6.2				
10 X 10 250 X 250	X ¾	160	15.00	12.44	22.0				
	X 20	1103	381.00	315.98	10.0				
	X 1	160	15.00	12.44	22.0				
	X 25	1103	381.00	315.98	10.0				
	X 1½	160	15.00	12.44	22.0				
	X 40	1103	381.00	315.98	10.0				
	X 2	160	15.00	12.44	22.0				
	X 50	1103	381.00	315.98	10.0				
12 X 12 300 X 300	X ¾	160	15.00	14.65	29.1				
	X 20	1103	381.00	372.11	13.2				
	X 1	160	15.00	14.65	29.1				
	X 25	1103	381.00	372.11	13.2				
	X 1½	160	15.00	14.65	29.1				
	X 40	1103	381.00	372.11	13.2				
	X 2	160	15.00	14.65	29.1				
	X 50	1103	381.00	372.11	13.2				

# Victaulic Aquamine® Products

## SERIES 2900

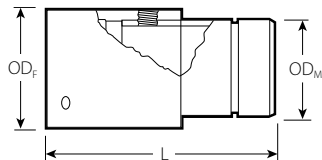
### STYLES 2937, 2938 & 2939 AQUAMINE GROOVE FORMED OUTLET FITTING



Size	Length	O.D.	Maximum Working Pressure – psi/kPa		
			Style 2937 1" NPT Tap	Style 2938 1 1/2" NPT Tap	Style 2939 2" NPT Tap
2 60.3	7.50 191	3.20 81	250 1725	–	–
3 88.9	11.00 279	4.38 111	250 1725	250 1725	–
4 114.3	12.00 305	5.47 139	250 1725	250 1725	250 1725
6 168.3	12.00 305	7.84 199	250 1725	250 1725	250 1725

NOTE: The pressure ratings noted above are based upon the capability of the female threaded socket. If a plastic threaded pipe nipple is used, the rating will be based upon values cited in ASTM-D1785 for Schedule 80 threaded pipe nipples.

### SERIES 2940 AQUAMINE GROOVE OUTLET FITTING (ALF X ALM X NPT-F)



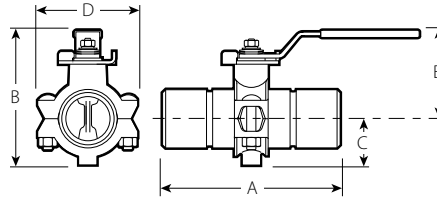
Size	Pressure Rating	L	O.D. <sub>N</sub>	O.D. <sub>R</sub>	Weight
2 X 2 50 X 50	X 3/4	250	10.13	3.20	1.5
	X 20	1724	257.3	81.28	0.7
	X 1	250	10.13	3.20	1.5
	X 25	1724	257.3	81.28	0.7
	X 1 1/2	240	13.50	4.35	3.6
	X 40	1655	342.9	110.49	1.6
3 X 3 80 X 80	X 3/4	250	13.50	4.35	3.6
	X 20	1724	342.9	110.49	1.6
	X 1	250	13.50	4.35	3.6
	X 25	1724	342.9	110.49	1.6
	X 1 1/2	240	13.50	4.35	3.6
	X 40	1655	342.9	110.49	1.6
4 X 4 100 X 100	X 3/4	250	15.00	5.47	5.9
	X 20	1724	381.0	138.94	2.7
	X 1	250	15.00	5.47	5.9
	X 25	1724	381.0	138.94	2.7
	X 1 1/2	240	15.00	5.47	5.9
	X 40	1655	381.0	138.94	2.7
6 X 6 150 X 150	X 3/4	250	17.00	7.84	11.8
	X 20	1724	431.8	199.14	5.4
	X 1	250	17.00	7.84	11.8
	X 25	1724	431.8	199.14	5.4
	X 1 1/2	240	17.00	7.84	11.8
	X 40	1655	431.8	199.14	5.4
8 X 8 200 X 200	X 3/4	200	19.00	8.625	21.5
	X 20	1379	482.6	258.83	9.8
	X 1	200	19.00	8.625	21.5
	X 25	1379	482.6	258.83	9.8
	X 1 1/2	200	19.00	8.625	21.5
	X 40	1379	482.6	258.83	9.8
10 X 10 250 X 250	X 3/4	160	22.25	10.19	21.5
	X 20	1103	571.5	315.98	9.8
	X 1	160	22.25	10.19	21.5
	X 25	1103	571.5	315.98	9.8
	X 1 1/2	160	22.25	10.19	21.5
	X 40	1103	571.5	315.98	9.8
12 X 12 300 X 300	X 3/4	160	22.25	12.44	32.9
	X 20	1103	571.5	315.98	14.9
	X 1	160	22.25	12.44	32.9
	X 25	1103	571.5	315.98	14.9
	X 1 1/2	160	22.25	12.44	32.9
	X 40	1103	571.5	315.98	14.9

# Victaulic Aquamine® Products

## SERIES 2900

### AQUAMINE® BUTTERFLY VALVE

The Aquamine® butterfly valve is designed for use with Aquamine system components for pipe sizes ranging from 2 – 6”/50 – 150mm. Series AQP valves are rated for 250psi/1725kPa at 73°F/23°C to provide reliable, leak-free, dead-end service.



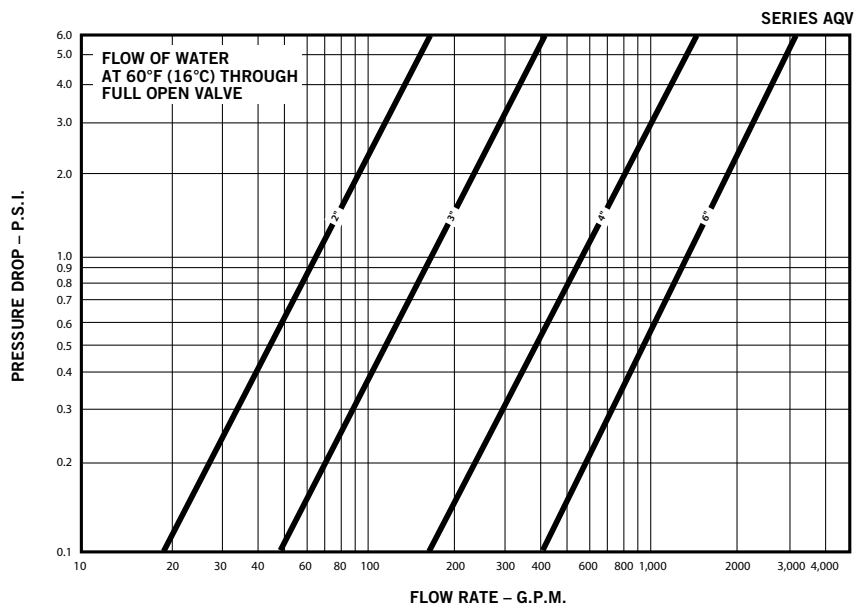
PATENTED

Pipe Inches mm		Dimensions Inches mm					Approx. Weight Each
Nominal Size	Actual Size	End to End A	Overall Height B	C	D	E	Lbs kg
2	2.375	7.20	5.47	1.88	4.06	3.59	3.3
50	60.3	183	139	48	103	91	1.5
3	3.500	10.61	7.12	2.76	5.63	4.37	6.0
80	88.9	269	181	70	143	111	2.7
4	4.500	12.00	10.15	3.50	7.00	6.65	14.0
100	114.3	305	258	89	178	169	6.4
6	6.625	12.50	12.65	4.50	9.50	8.65	28.0
150	168.3	318	321	114	241	220	12.7

### SERVICE RATING

Pressure De-Rating at Sustained Elevated Service Temperature			
Temperature °F °C	Working Pressure psi kPa	Temperature °F °C	Working Pressure psi kPa
80 27	220 1517	120 49	100 689
90 32	187 1289	130 54	75 517
100 38	155 1069	140 60	55 379
110 43	125 862		

### PERFORMANCE



# Victaulic Aquamine® Products

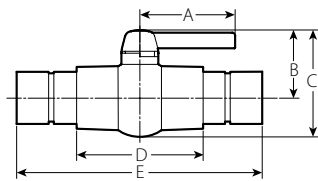
## SERIES 2900

### SERIES 2921 AQUAMINE® BALL VALVE

The Aquamine® ball valve is designed for use with Aquamine system components for pipe sizes ranging from 2 – 6"/50 – 150 mm. Series AQV valves are rated for 100 psi/700 kPa at 73°F/23°C to provide reliable, leak-free, dead-end service.



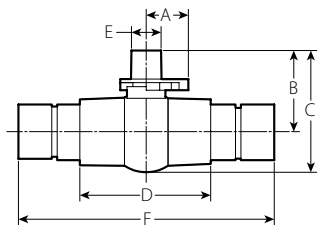
LEVER HANDLE



Valve Size Inches mm		Valve with Handle					Approx. Weight Each
Nominal Size	Actual Size	Dimensions					
		A	B	C	D	E	Lbs kg
2	2.375	2.58	3.42	5.21	6	12	1.6
50	60.3	65.5	86.7	132.3	152.4	304.8	0.7
3	3.500	6.4	5.94	7.2	8.5	16.5	6.4
80	88.9	162.6	150.9	182.9	215.9	419.1	2.9
4	4.500	8.53	6.13	9.45	11.73	21.5	12.6
100	114.3	216.6	155.7	240	297.9	546.1	5.7
6	6.625	10.12	7.3	11.9	15.82	26	28.8
150	168.3	257	185.4	302.3	401.8	660.4	13.1



SQUARE NUT



Valve Size Inches mm		Valve with Optional Square Nut						Approx. Weight Each
Nominal Size	Actual Size	Dimensions						
		A	B	C	D	E	F	Lbs kg
2	2.375	-	-	-	-	-	-	-
50	60.3	-	-	-	-	-	-	-
3	3.500	2.62	5.3	7.9	8.5	1.94	16.5	6.2
80	88.9	66.5	134.6	200.7	215.9	49.3	419.1	2.8
4	4.500	2.62	6.13	9.45	11.73	1.64	21.5	12.3
100	114.3	66.5	155.7	240	297.9	49.3	546.1	5.6
6	6.625	-	-	-	-	-	-	-
150	168.3	-	-	-	-	-	-	-

Size Inches mm	End Configurations	Operator
2	Aquamine x Aquamine	Handle
	Aquamine x FPT	Handle
	Aquamine x Groove	Handle
3	Aquamine x Aquamine	Handle
	Aquamine x FPT	Handle
	Aquamine x Groove	Handle
4	Aquamine x Aquamine	Square Nut
	Aquamine x FPT	Square Nut
	Aquamine x Groove	Square Nut
6	Aquamine x Aquamine	Handle
	Aquamine x FPT	Handle
	Aquamine x Groove	Handle

# Victaulic Aquamine® Products

## SERIES 2900

### PERFORMANCE Cv/Kv

C<sub>v</sub> values for flow of water at +60°F/+16°C with various disc positions are shown in the table below. Some of the following values are estimated. For exact values, please contact Victaulic for details.

$$\Delta P = \frac{Q^2}{C_v^2}$$

$$Q = C_v \times \sqrt{\Delta P}$$

#### Where:

Q = Flow (GPM)

ΔP = Pressure Drop (psi)

C<sub>v</sub> = Flow Coefficient

Size		Flow coefficient (full open)
Inches	mm	C <sub>v</sub> /K <sub>v</sub>
2	50	138
3	80	307
4	100	505
6	150	1208
		1039

### SERVICE RATING

Pressure De-Rating at Sustained Elevated Service Temperature	
Temperature	Working Pressure
°F °C	psi kPa
120 49	100 689
130 54	74 517
140 60	55 379

# Victaulic Aquamine® Products

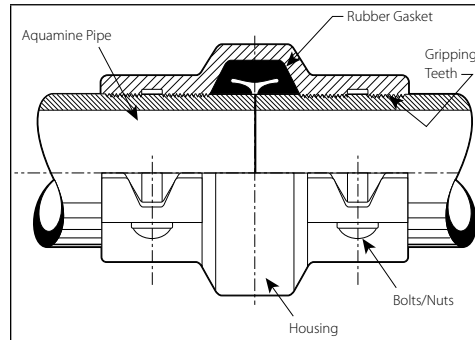
## SERIES 2900

### SERIES 2970 AQUAMINE® PLAIN END PIPE COUPLING



The Aquamine® plain end pipe repair and access coupling provides the convenience of bolted mechanical assembly of Aquamine PVC pipe. There is no pipe preparation; no solvent cement mess or cure time.

The rugged ductile iron housing has patented, specially formed integral gripping teeth which engage into the pipe to secure it as the bolts are tightened metal-to-metal. Couplings are rated to 350 psi working pressure, or the working pressure of the Aquamine pipe, whichever is lower.

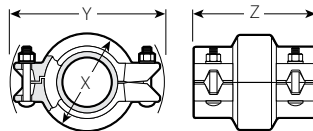


EXAGGERATED FOR CLARITY

**Housing** – Durable ductile iron body for rugged service conditions. Integral gripping teeth provide connection to the pipe. Rust-resistant blue enamel finish is standard. The ductile iron body conforms to ASTM A-536.

**Pre-lubricated Gasket** – Elastomer gasket with triple seal design provides a leak free seal for a wide variety of services. The gasket is pre-lubricated to speed and ease assembly. The Grade "T" nitrile gasket is suited for ambient water and petroleum services. (Always refer to pipe manufacturer's data for temperature and pressure ratings.)

**Bolts/Nuts/Washers** – Zinc plated carbon steel bolts and nuts are supplied standard with Aquamine plain end couplings. The four bolt assembly speeds installation versus solvent cement assembly or the multiple bolts required for flanged connections. Bolts have a minimum tensile strength of 110,000 psi. All sizes are supplied with hardened steel washers meeting ASTM F-436 Type 3 (weathering steel).



(2" / 50 mm size has one bolt per side.)

Pipe Inches mm		Coupling Dimensions Inches mm			Bolt/Nut No. – Size	Approximate Weight Each
Nominal Size	Actual Size	X	Y	Z	Inches	Lbs kg
2 50	2.375 60.3	3.64 92	5.94 151	3.62 92	2 – ½ X 2 ½	3.5 1.6
3 80	3.500 88.9	4.58 116	6.95 177	4.56 116	4 – ½ X 2 ¾	7.7 3.5
4 100	4.500 114.3	5.88 149	8.09 205	5.78 147	4 – ½ X 2 ¾	11.6 5.3
6 150	6.625 168.3	8.00 203	10.84 275	5.88 149	4 – ¾ X 3 ¼	16.4 7.4
8 200	8.625 219.1	10.19 259	13.22 336	6.00 152	4 – ¾ X 3 ¼	24.9 11.3

\* Working pressure and End Load are total, from all internal and external loads, based on proper coupling assembly with bolts pads metal-to-metal, on Aquamine PVC pipe. Couplings are designed to be used with plain end pipe.

Metric thread size bolts (plated) are available (color coded) for all coupling sizes upon request. Contact Aquamine for details.

WARNING: Piping systems must always be depressurized and drained before attempting disassembly and removal of any Aquamine piping products.

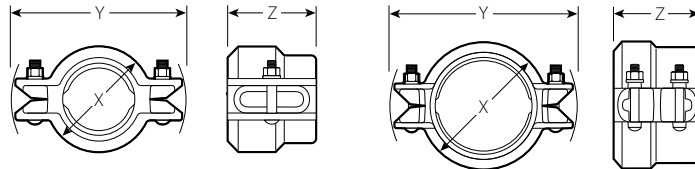
# Victaulic Aquamine® Products

## SERIES 2900

### SERIES 2972 AQUAMINE® PLAIN-END PVC TO GROOVE TRANSITION COUPLING



The new Aquamine® Style 2972 transition coupling provides the convenience of bolted, mechanical assembly for plain-end PVC pipe to grooved-end steel pipes, valves, and fittings. This coupling allows you to join shorter sections of PVC pipe, or insert fittings and valves into a pipe section without having to use special adapters.



2" Size

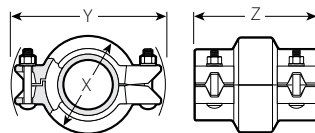
3 - 8" Sizes

Pipe Size		Dimensions Inches mm			Bolt Data		
Nominal Diameter Inches mm	Actual Outside Diameter Inches mm	X	Y	Z	Quantity	Size Inches	
2 50	2.375 60.3	3.31 84	5.22 133	2.78 71	2	3/8	X 2
3 80	3.500 88.9	4.38 111	6.99 178	3.20 81	4	1/2	X 2 3/4
4 100	4.500 114.3	5.68 144	8.25 210	3.90 99	4	1/2	X 2 3/4
6 150	6.625 168.3	7.84 199	11.25 286	4.00 102	4	5/8	X 3 3/4
8 200	8.625 219.1	10.18 259	13.96 355	4.16 106	4	5/8	X 3 1/2

### SERIES 2971 AQUAMINE® PLAIN-END PVC TO HDPE TRANSITION COUPLING



The Aquamine® Style 2971 transition coupling provides the convenience of bolted, mechanical assembly of plain-end PVC pipe, such as Aquamine, to plain-end high-density polyethylene (HDPE)/polybutylene pipe without special adapters. There is no solvent cement mess or lengthy cure times, and no butt fusion equipment is necessary.



(2"/50mm size has one bolt per side.)

Pipe Size		Coupling Dimensions Inches mm			Bolt/Nut No. - Size	Approx. Weight Each
Nominal Diameter Inches mm	Actual Outside Diameter Inches mm	X	Y	Z	Inches	Lbs kg
2 50	2.375 60.3	3.64 92	5.94 151	3.62 92	2 - 1/2 X 2 1/2	3.5 1.6
3 80	3.500 88.9	4.58 116	6.95 177	4.56 116	4 - 1/2 X 2 3/4	7.7 3.5
4 100	4.500 114.3	5.88 149	8.09 205	5.78 147	4 - 1/2 X 2 3/4	11.6 5.3
6 150	6.625 168.3	8.00 203	10.84 275	5.88 149	4 - 5/8 X 3 1/4	16.4 7.4
8 200	8.625 219.1	10.19 259	13.22 336	6.00 152	4 - 5/8 X 3 1/4	24.9 11.3

## Victaulic Aquamine® Products

### SERIES 2900

#### AE1800 AIR RELEASE VALVE

Series AE1800 Air release valve safely bleeds air from the piping system.



#### APG – AQUAMINE GROOVING TOOL

The APG is a manually operated tool used for producing a cut spline groove and beveled end on 4 - 12"/ 100 - 300mm Aquamine pipe to prepare the pipe to receive an Aquamine coupling. It is an orbital tool which is rotated around a stationary, secured pipe. The tool may be operated on pipe held in a pipe vise or on supported in-place piping that is depressurized and drained.





# Victaulic Aquamine® Products

## SERIES 2900

### TYPICAL SPECIFICATION FOR AQUAMINE PIPING SYSTEM

#### 1.0 SCOPE

This specification covers the requirements for a reusable, spline-connected, high impact polyvinyl chloride (PVC) piping system as manufactured by Aquamine, LLC (a Victaulic Company).

The pipe and couplings used in this system shall be listed in NSF Certified Product Listing under Standard 61, for potable water (health effects) and designated as NSF-61.

NOTE: The Aquamine PVC piping system is not to be used in compressed air and gas service.

#### 2.0 PIPE

Pipe shall be Aquamine high impact type manufactured from a special formulation of PVC 1120 defined as type 1, grade 1 (class 12454) according to ASTM D-1784 and shall contain impact modifiers and ultraviolet inhibitors to enhance long-term performance.

Pipe shall be designed to meet all PVC pipe requirements as specified in ASTM D-2241. Each pipe end shall be grooved to be connected using a specially designed coupling and spline.

Pipe shall be listed under NSF Standard 61 for potable water (health effects) and designated as NSF-61.

#### 3.0 COUPLINGS

Couplings shall be Victaulic Aquamine brand made from a special high impact formulation of PVC 1120 (type 1, grade 1 or class 12454 according to ASTM D-1784). Couplings shall be designed to meet ASTM D-3139 standards for joints for plastic pressure pipes using flexible elastomeric seals.

Couplings shall provide a restrained joint by means of a nylon spline inserted into the space created when the groove on the pipe and the interior groove in the coupling are aligned.

Couplings shall contain a pre-lubricated permanent type O-ring seal on each end for a watertight hydraulic seal. The O-rings shall meet ASTM F-477 (Standard Specification for Elastomeric Seal for Joining PVC Pipe).

Couplings shall be listed under NSF Standard 61, for potable water (health effects) and designated as NSF-61.

#### 4.0 FITTINGS

Fittings shall be manufactured by Aquamine, LLC with spline-grooved ends for use with Aquamine pipe and couplings.

#### 5.0 VALVES

Valves shall be Aquamine AQV Series butterfly valves, rated 250psi at 73°F/1725kPa at 23°C.

NOTE: Operating pressure is reduced at temperatures greater than 70°F. Ductile iron (ASTM A-536, grade 65-45-12) housing, PVC 1120 body. Ductile iron disc, rubber encapsulated with Grade "T" Nitrile compound conforming to ASTM D-2000 designation 5BG615A14B24.

#### 6.0 ASSEMBLY

Assembly of Aquamine couplings and pipe shall be in accordance with the latest revision of the Aquamine Assembly and Installation Instructions AM-I-100.

### WARRANTY

Refer to the Warranty section of the current Price List or contact Victaulic for details.

### NOTE

This product shall be manufactured by Victaulic or to Victaulic specifications. All products to be installed in accordance with current Victaulic installation/assembly instructions. Victaulic reserves the right to change product specifications, designs and standard equipment without notice and without incurring obligations.

For complete contact information, visit [www.victaulic.com](http://www.victaulic.com)

50.01 2846 REV G UPDATED 11/2011

VICTAULIC IS A REGISTERED TRADEMARK OF VICTAULIC COMPANY. © 2011 VICTAULIC COMPANY. ALL RIGHTS RESERVED.

50.01

